

# Molding Core Vibrator

## Industrial Vibrator for Foundry Molding Core Machines

NAVCO® Molding Core Vibrators are high frequency pneumatic piston vibrators. These heavy duty vibrators offer long service life and ensure rapid, efficient core drawing and smooth surface finish of castings in foundry roll over molding machines.

### Foundry Vibrators, Made in the USA

Made in the USA, Molding Core Vibrators are manufactured in a state of the art manufacturing facility with checks at critical steps to assure the highest quality available.

### Long Productive Operating Life

Designed with minimal moving parts, these vibrators provide a long, reliable operating life in the harshest of conditions.

### Higher Density Molds with Smoother Finishes

Adding vibration to the mold core process creates a higher density mold which in turn creates smoother finishes on the final product.

### Pneumatic (Air) Power to Fit Your Work Flow

Molding Core Vibrator are pneumatic / air vibrators that operate at a low air consumption level and are easily incorporated into existing machines.



### Sinto Roll Over Molding Core Machine

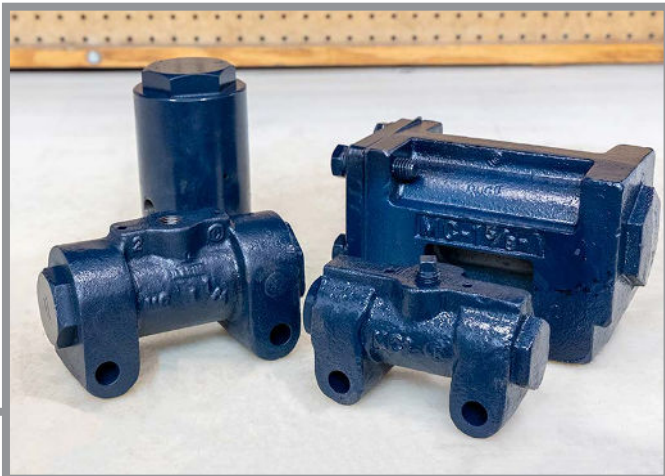
With models designed specifically for Sinto Roll Over Molding Core Machines the molding core vibrator provides a reliable, non-marking way of releasing the core, producing a higher quality final product.

### Hunter Roll Over Molding Core Machines

Precision designed models are available for placement in special Hunter vibrator holding arm, with custom-placed exhaust ports in the head section and two direction, high frequency piston action. (Two vibrators are used on each machine)

### Herman Roll Over Molding Machines

Precision designed models are available for Herman-type molding machines with no body assembly bolts to shear, fatigue or stretch.



## CONTACT US TODAY AT

E. SALES@NAVCO.US

W. NAVCO.US

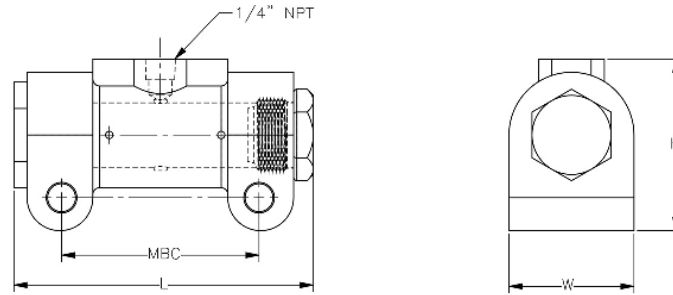
A. 11929 BRITTMOORE PARK DR.

P. 832.467.3636

F. 832.467.3800

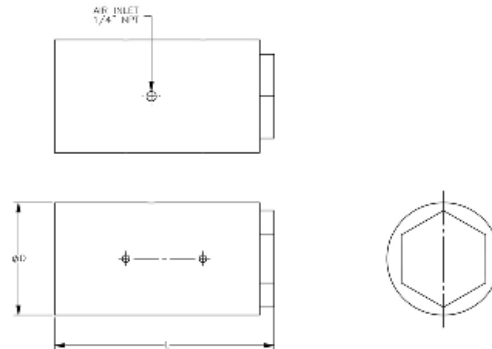
HOUSTON, TX 77041

# Dimensions



Model	L	W	H	Mounting Bolt Centers *	Wt. - lbs
MC 1.00	5"	2"	2-3/4"	2-7/8" or 3"	4
MP 1.25	5-3/4"	2-3/8"	3-1/4"	3-3/4" or 4"	7
MP 1.62	7"	3-1/4"	1-1/4"	4"	16

\* MC 1.00 & MC 1.25 are available with optional bolt centers to fit a variety of different machines.



Model	L	D	Wt. - lbs
SMC 1.62	5-3/4"	2-15/16"	9
SMC 1.62 Hunter	5.700"	2-15/16"	8-3/4

**CONTACT US TODAY AT**

E. SALES@NAVCO.US  
P. 832.467.3636

W. NAVCO.US  
F. 832.467.3800

A. 11929 BRITTMOORE PARK DR.  
HOUSTON, TX 77041